

PARISH OF ASCENSION

OFFICE OF PLANNING AND DEVELOPMENT

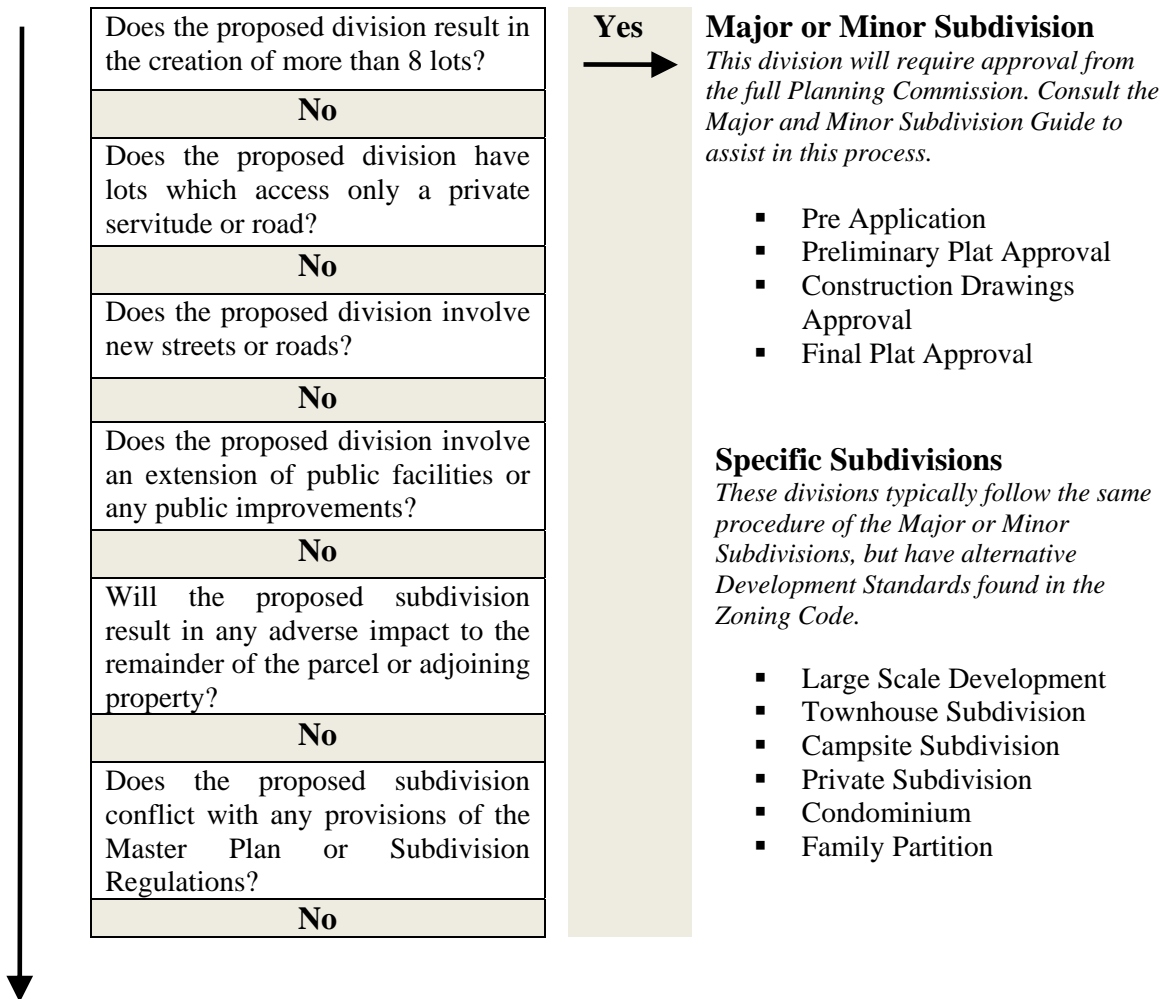
PLANNING DEPARTMENT



Tommy Martinez
Parish President

DETERMINING THE TYPE OF LAND DIVISION

Any parcel, lot, track division or re-division shall require approval from the Planning Commission. The chart below will help you determine what type of division you are making. Once this determination is made, you can find documentation on the specific process to complete.



Simple Division

This division can be approved at staff level. Consult the Simple Division Guide to assist in this process.

- Pre Application
- Final Plat Approval