

ADDENDUM NO. 4 TO THE PROJECT MANUAL

NEW RIVER CANAL TILTING WEIR
ASCENSION PARISH, LOUISIANA

PARISH PROJECT NO. EAD 15-004
HDCA PROJECT 20121-14

Prepared For:

EAST ASCENSION CONSOLIDATED GRAVITY DRAINAGE DISTRICT NO.1
42077 CHURCHPOINT ROAD
GONZALES, LOUISIANA 70737



Prepared by:

HDC
H. Davis Cole &
Associates, LLC
Consulting Engineers



H. DAVIS COLE & ASSOCIATES, LLC
1340 POYDRAS STREET, SUITE 1840
NEW ORLEANS, LA 70112
Phone (504) 836-2020
Fax (504) 836-2010
www.hdaviscole.com

NOVEMBER 9, 2022

**ADDENDUM NO. 4 TO THE
PROJECT MANUAL**

FOR

**NEW RIVER CANAL TILTING WEIR
ASCENSION PARISH, LOUISIANA**

**EAD PROJECT NO. EAD-15-004
HDCA PROJECT NO. 2021-14**

H. DAVIS COLE & ASSOCIATES, LLC (HDCA)
1340 POYDRAS STREET, SUITE 1850
NEW ORLEANS, LOUISIANA
(504) 836 - 2020

This addendum forms a part of the Contract Documents and modifies Specification sections and Drawings as denoted below. Acknowledge receipt of this addendum in the space provided on the Bid Form. Failure to do so may subject the Bidder to disqualification. Bidder is responsible to disseminate this addendum to all subcontractors and material suppliers concerned.

This Addendum No. 4 supersedes any contrary or conflicting information in any previously-issued addenda. This Addendum shall be part of the Contract Documents. The following items are issued to add, delete, modify, and clarify the Contract Documents. These items shall be part of and shall have full force and effect as the Contract Documents and the cost involved shall be included in the bid price.

SEALED BIDS will be received by Ascension Parish Government, Purchasing Department, 615 E. Worthey, Gonzales, Louisiana, 70737 at **11:00 a.m., on Tuesday, November 15, 2022** for the above referenced project. Bids will be publicly opened and read aloud. Any bid received after closing time will be returned unopened.

ATTACHMENTS

A1. **REVISED** Electrical Drawings 01-E1; 01-E2; 01-E3; and 01-E4

CLARIFICATIONS

- C1. The automatic transfer switch shall be rated for 100A as per the riser diagram on Sheet 01-E2
- C2. The preferred control panel manufacturer for Ascension Parish is I.C.E. Sales & Service, LLC located in Des Allemands, LA. This is the same preferred manufacturer of the SCADA panel.

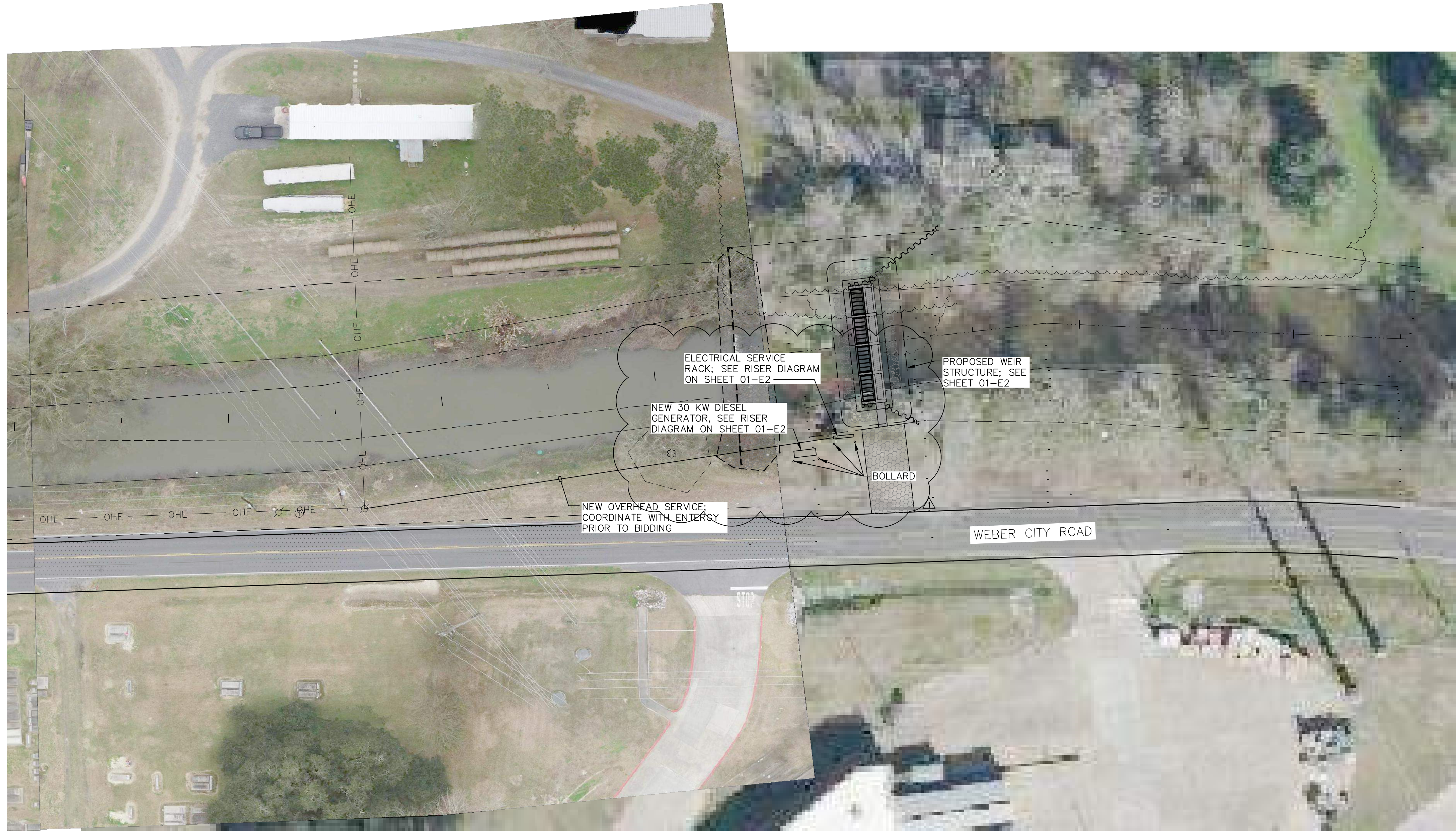
CHANGES TO CONTRACT SPECIFICATIONS

SP1. **None**

CHANGES TO CONTRACT DRAWINGS

- D1. Sheet 01-E4: Updated the 200A manual transfer switch shown on the one-line diagram to be a 100A automatic transfer switch to match riser diagram on Sheet 01-E2. Updated the verbiage for the meter on the one-line diagram to read correctly.
- D2. Re-issued Sheets 01-E1, 01-E2, 01-E3, and 01-E4 for clarity.

END OF ADDENDUM 4



ELECTRICAL SITE PLAN
SCALE: 1" = 30'-0" (22"x34" SHEET)



SYMBOL SCHEDULE	
○ _B	RAIL MOUNTED LED FIXTURE
●	PHOTOELECTRIC CELL
⊕	GROUND FAULT INTERRUPTER DUPLEX RECEPTACLE
□	FUSED SAFETY DISCONNECT SWITCH
WP	WEATHERPROOF
()	CONDUIT IN WALLS OR CEILING

ELECTRICAL GENERAL NOTES

- ALL ELECTRICAL WORK SHALL BE DONE IN STRICT ACCORDANCE WITH THE LATEST EDITION OF THE NATIONAL ELECTRICAL CODE. ALL WORK SHOWN IS NEW UNLESS NOTED OTHERWISE.
- FIELD VERIFY EXISTING CONDITIONS PRIOR TO BIDDING.
- PRIOR TO CONSTRUCTION, VERIFY THE LOCATION OF ALL EXISTING UNDERGROUND UTILITIES. AVOID DISTURBANCE OF EXISTING UTILITIES NOT INCLUDED IN THIS PROJECT.
- THE CONDUIT SYSTEM, ALL ELECTRICAL EQUIPMENT, ALL STEEL STRUCTURES, MOTOR FRAMES, ETC. SHALL BE CONNECTED TO THE GROUNDING SYSTEM PER ARTICLE 250 OF THE NATIONAL ELECTRICAL CODE.
- ALL EQUIPMENT LOCATIONS SHALL BE VERIFIED IN THE FIELD WITH MECHANICAL TRADES. CONDUIT ROUTING AND EQUIPMENT LOCATIONS SHOWN ARE DIAGRAMMATIC ONLY. THE EXACT LOCATION OF ALL EQUIPMENT AND ROUTING OF CABLES SHALL BE COORDINATED WITH & APPROVED BY THE OWNER'S REPRESENTATIVE DURING CONSTRUCTION.
- LOCATIONS OF CONDUITS, BOXES, FITTINGS, ETC., ARE DIAGRAMMATIC. IT SHALL BE THE ELECTRICAL CONTRACTOR'S RESPONSIBILITY TO VERIFY ALL SIZES AND LOCATIONS. REVIEW ALL MECHANICAL SHOP DRAWINGS AND COORDINATE WITH THE MECHANICAL CONTRACTOR, OWNER, AND ENGINEER TO INSURE THE TIMELY DELIVERY AND PROPER INSTALLATION OF ALL ELECTRICAL EQUIPMENT. (I.E. CONTROL PANELS, AREA LIGHTING, ETC.)
- BEFORE INSTALLATION, THE ELECTRICAL CONTRACTOR SHALL SUBMIT DETAILED LAYOUT DRAWINGS TO THE ENGINEER FOR REVIEW COVERING PROPOSED LOCATIONS, MOUNTING, AND ROUTING FOR ALL CONDUITS, SERVICES, FITTINGS, GROUND RODS, AREA LIGHTING, CONTROL PANELS, SUPPORTS, ETC.
- ENCLOSURE, JUNCTION BOXES, RECEPTACLES AND ALL OTHER ELECTRICAL EQUIPMENT USED OUTDOOR SHALL BE OF NEMA 3X CONSTRUCTION UNLESS OTHERWISE NOTED.
- MINIMUM CONDUIT SIZE IS 3/4". ALL EXPOSED CONDUIT SHALL BE RIGID STEEL AND ALL DUCT BANK CONDUIT SHALL BE SCHEDULE 40PVC UNLESS NOTED OTHERWISE.
- THE ELECTRICAL CONTRACTOR SHALL COORDINATE WITH THE MECHANICAL CONTRACTOR AND CAREFULLY REVIEW THE MECHANICAL PACKAGES PROPOSED TO BE SUPPLIED. IT SHALL BE THE ELECTRICAL CONTRACTOR'S RESPONSIBILITY TO INSURE THAT ALL WIRE AND CONDUIT NEEDED FOR ELECTRICAL APPURTENANCES, ASSOCIATED WITH MECHANICAL PACKAGES, ARE PROVIDED EVEN IF NOT SPECIFICALLY CALLED FOR IN THE PLANS AND SPECIFICATIONS.
- THERE SHALL BE WARNING LABELS LOCATED ON THE FRONT OF EACH ELECTRICAL ENCLOSURE. SEE SIGNAGE DETAIL ON SHEET 01-E3.
- CONTRACTOR SHALL COORDINATE ALL ASPECTS OF NEW SERVICE, INCLUDING LEAD TIMES, WITH UTILITY COMPANY AND INCLUDE ALL COSTS IN BID.
- WARNING TAPE SHALL BE INSTALLED 12 TO 18 INCHES BELOW GRADE OVER ALL CONDUITS.
- PROVIDE 1/4" MINIMUM DIAMETER PULL ROPE. PULL ROPE SHALL NOT BE NYLON STRING.
- FOR SERVICE ENTRANCE CONDUITS, UTILIZE LONG RADIUS (36") CONDUIT BENDS.
- ALL CONDUIT RISERS FROM UNDERGROUND SHALL HAVE RIGID METAL ELLS AND RISERS.
- SETScrew CONNECTOR FITTINGS SHALL NOT BE PERMITTED.



IF THIS BAR DOES NOT MEASURE 1" (BASED ON 12"x34" SHEET) THEN DRAWING IS NOT TO SCALE.



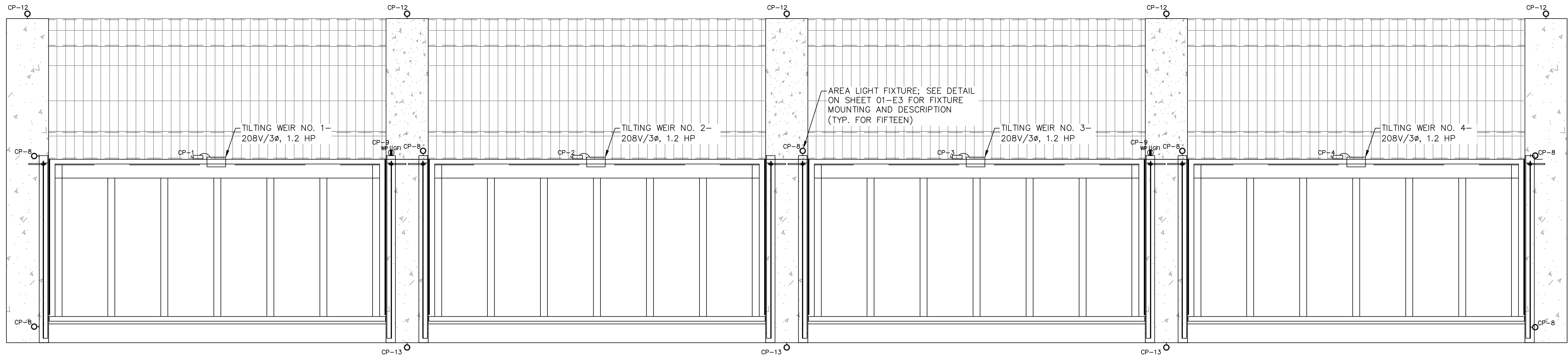
REVISION RECORD			
MARK	DATE	DESCRIPTION	BY
1	10/03/22	GENERATOR ADDITION	MLT

DESIGNED BY:	SPG	CHECKED BY:	MLT
DATE:	08/24/22	DRAWN BY:	SPG
DETAILED BY:	SPG	HDC PROJECT NO.	2021-14

NEW RIVER TILTING WEIR STRUCTURE
LOUISIANA
ASCENSION PARISH
EAST ASCENSION CONSOLIDATION GRAVITY DRAINAGE DISTRICT 1
ASCENSION PARISH
ELECTRICAL SITE PLAN

SHEET ID	01-E1
SHEET SET	28 OF 31



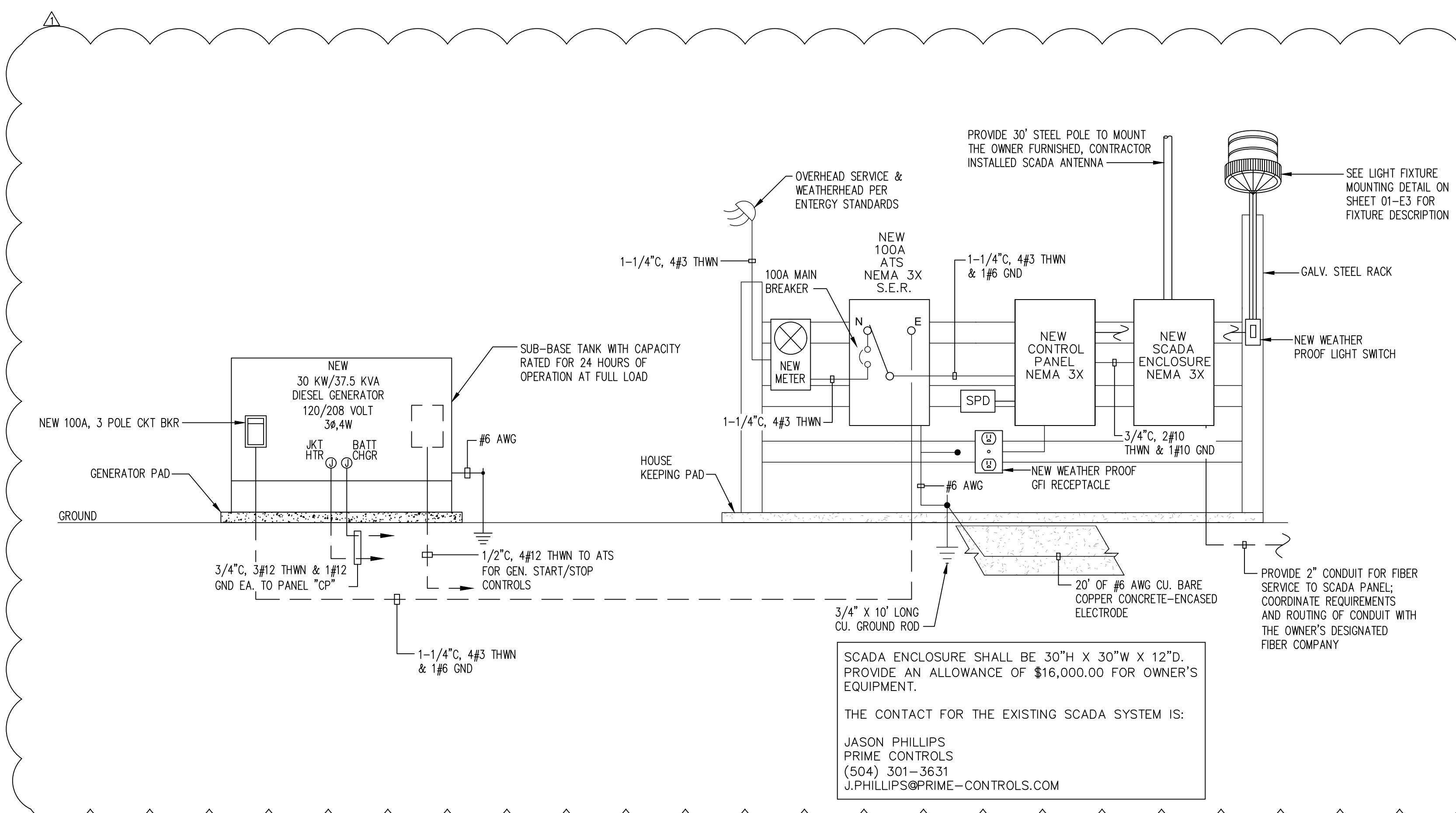


ELECTRICAL PLAN VIEW

SCALE: 1/2" = 1'-0" (22"x34" SHEET)

ELECTRICAL GENERAL NOTES

- ALL ELECTRICAL WORK SHALL BE DONE IN STRICT ACCORDANCE WITH THE LATEST EDITION OF THE NATIONAL ELECTRICAL CODE. ALL WORK SHOWN IS NEW UNLESS NOTED OTHERWISE.
- FIELD VERIFY EXISTING CONDITIONS PRIOR TO BIDDING.
- PRIOR TO CONSTRUCTION, VERIFY THE LOCATION OF ALL EXISTING UNDERGROUND UTILITIES. AVOID DISTURBANCE OF EXISTING UTILITIES NOT INCLUDED IN THIS PROJECT.
- ALL DEMOLISHED EQUIPMENT SHALL BE TURNED OVER TO THE OWNER'S DESIGNATED REPRESENTATIVE FOR RIGHT OF FIRST REFUSAL. CONTRACTOR SHALL DISPOSE OF ANY EQUIPMENT REFUSED BY THE OWNER'S REPRESENTATIVE.
- THE CONDUIT SYSTEM, ALL ELECTRICAL EQUIPMENT, ALL STEEL STRUCTURES, MOTOR FRAMES, ETC. SHALL BE CONNECTED TO THE GROUNDING SYSTEM PER ARTICLE 250 OF THE NATIONAL ELECTRICAL CODE.
- ALL EQUIPMENT LOCATIONS SHALL BE VERIFIED IN THE FIELD WITH MECHANICAL TRADES, CONDUIT ROUTING AND EQUIPMENT LOCATIONS SHOWN ARE DIAGRAMMATIC ONLY. THE EXACT LOCATION OF ALL EQUIPMENT AND ROUTING OF CABLES SHALL BE COORDINATED WITH & APPROVED BY THE OWNER'S REPRESENTATIVE DURING CONSTRUCTION.
- LOCATIONS OF CONDUITS, BOXES, FITTINGS, ETC., ARE DIAGRAMMATIC. IT SHALL BE THE ELECTRICAL CONTRACTOR'S RESPONSIBILITY TO VERIFY ALL SIZES AND LOCATIONS. REVIEW ALL MECHANICAL SHOP DRAWINGS AND COORDINATE WITH THE MECHANICAL CONTRACTOR, OWNER, AND ENGINEER TO INSURE THE TIMELY DELIVERY AND PROPER INSTALLATION OF ALL ELECTRICAL EQUIPMENT. (I.E. CONTROL PANELS, AREA LIGHTING, ETC.)
- BEFORE INSTALLATION, THE ELECTRICAL CONTRACTOR SHALL SUBMIT DETAILED LAYOUT DRAWINGS TO THE ENGINEER FOR REVIEW COVERING PROPOSED LOCATIONS, MOUNTING, AND ROUTING FOR ALL CONDUITS, SERVICES, FITTINGS, GROUND RODS, AREA LIGHTING, CONTROL PANELS, SUPPORTS, ETC.
- ENCLOSURE, JUNCTION BOXES, RECEPTACLES AND ALL OTHER ELECTRICAL EQUIPMENT USED OUTDOOR SHALL BE OF NEMA 3X (STAINLESS STEEL) CONSTRUCTION UNLESS OTHERWISE NOTED.
- MINIMUM CONDUIT SIZE IS 3/4". ALL EXPOSED CONDUIT SHALL BE RIGID STEEL AND ALL DUCT BANK CONDUIT SHALL BE SCHEDULE 40PVC UNLESS NOTED OTHERWISE.
- THE ELECTRICAL CONTRACTOR SHALL COORDINATE WITH THE MECHANICAL CONTRACTOR AND CAREFULLY REVIEW THE MECHANICAL PACKAGES PROPOSED TO BE SUPPLIED. IT SHALL BE THE ELECTRICAL CONTRACTOR'S RESPONSIBILITY TO INSURE THAT ALL WIRE AND CONDUIT NEEDED FOR ELECTRICAL APPURTENANCES, ASSOCIATED WITH MECHANICAL PACKAGES, ARE PROVIDED EVEN IF NOT SPECIFICALLY CALLED FOR IN THE PLANS AND SPECIFICATIONS.
- THERE SHALL BE WARNING LABELS LOCATED ON THE FRONT OF EACH ELECTRICAL ENCLOSURE. SEE SIGNAGE DETAIL ON SHEET 01-E3.
- CONTRACTOR SHALL COORDINATE ALL ASPECTS OF NEW SERVICE, INCLUDING LEAD TIMES, WITH UTILITY COMPANY AND INCLUDE ALL COSTS IN BID.
- WARNING TAPE SHALL BE INSTALLED 12 TO 18 INCHES BELOW GRADE OVER ALL CONDUITS.
- PROVIDE 1/4" MINIMUM DIAMETER PULL ROPE. PULL ROPE SHALL NOT BE NYLON STRING.
- FOR SERVICE ENTRANCE CONDUITS, UTILIZE LONG RADIUS (36") CONDUIT BENDS.
- ALL CONDUIT RISERS FROM UNDERGROUND SHALL HAVE RIGID METAL ELLS AND RISERS.
- SETScrew CONNECTOR FITTINGS SHALL NOT BE PERMITTED.



ELECTRICAL RISER DIAGRAM

SCALE: NONE

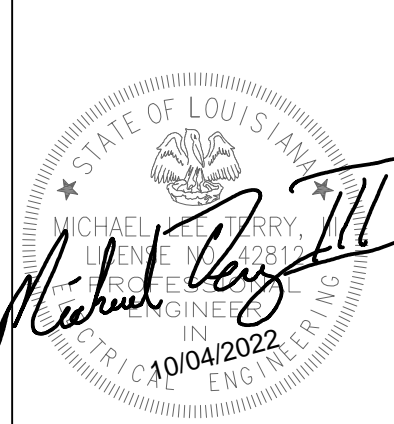
CONTROL PANEL "CP"

TYPE: BOLT-ON BREAKER PANELBOARD MOUNTING: SURFACE
 SERVICE: 120/208 VOLT, 3Ø, 4W AIC: 18,000
 MAIN: 100 AMP MLO REMARKS: GROUND BUS NEMA 3X

bkr. no.	trip amp	bkr. size	wire size	cd	service
1	20	3	12	3/4"	TILT WEIR NO. 1 (1.2 HP)
2	20	3	12	3/4"	TILT WEIR NO. 2 (1.2 HP)
3	20	3	12	3/4"	TILT WEIR NO. 3 (1.2 HP)
4	20	3	12	3/4"	TILT WEIR NO. 4 (1.2 HP)
5	20	1	12	3/4"	RACK LIGHTING
6	20	1	12	3/4"	CONTROL PANEL RECEPTACLE
7	20	1	12	3/4"	SCADA PANEL
8	20	1	12	3/4"	SITE LIGHTING
9	20	1	12	3/4"	SITE RECEPTACLES
10	20	1	12	3/4"	CONTROL PANEL A/C
11	20	1	12	3/4"	SCADA PANEL A/C
12	20	1	12	3/4"	SITE LIGHTING
13	20	1	12	3/4"	SITE LIGHTING
14	20	1	12	3/4"	GENERATOR JACKET HEATER
15	20	1	12	3/4"	GENERATOR BATTERY CHARGER
16	20	1	12	3/4"	GENERATOR FUEL POLISHER
17	30	3	10	3/4"	SPD
18-20	20	1			SPARES

LOAD SUMMARY

ITEM	CONNECTED LOAD (VOLT-AMPS)	DEMAND LOAD (VOLT-AMPS)
LIGHTING	992 X 125% =	1,240
RECEPTACLES	720	
(First 10,000 Watts)	720 X 100% =	720
LARGEST MOTOR (1.2 HP)	3,711 X 125% =	4,639
REMAINING MOTORS	11,133 X 100% =	11,133
MISC. (SCADA PANEL, SCADA A/C)	5,586 X 100% =	5,586
TOTAL		23,318 VA
AMPERAGE (AT 208V/3P) :		65 A



WARNING

IF THIS DRAWING DOES NOT MEASURE 1" (BASED ON 12"x34" SHEET) THEN DRAWING IS NOT TO SCALE.

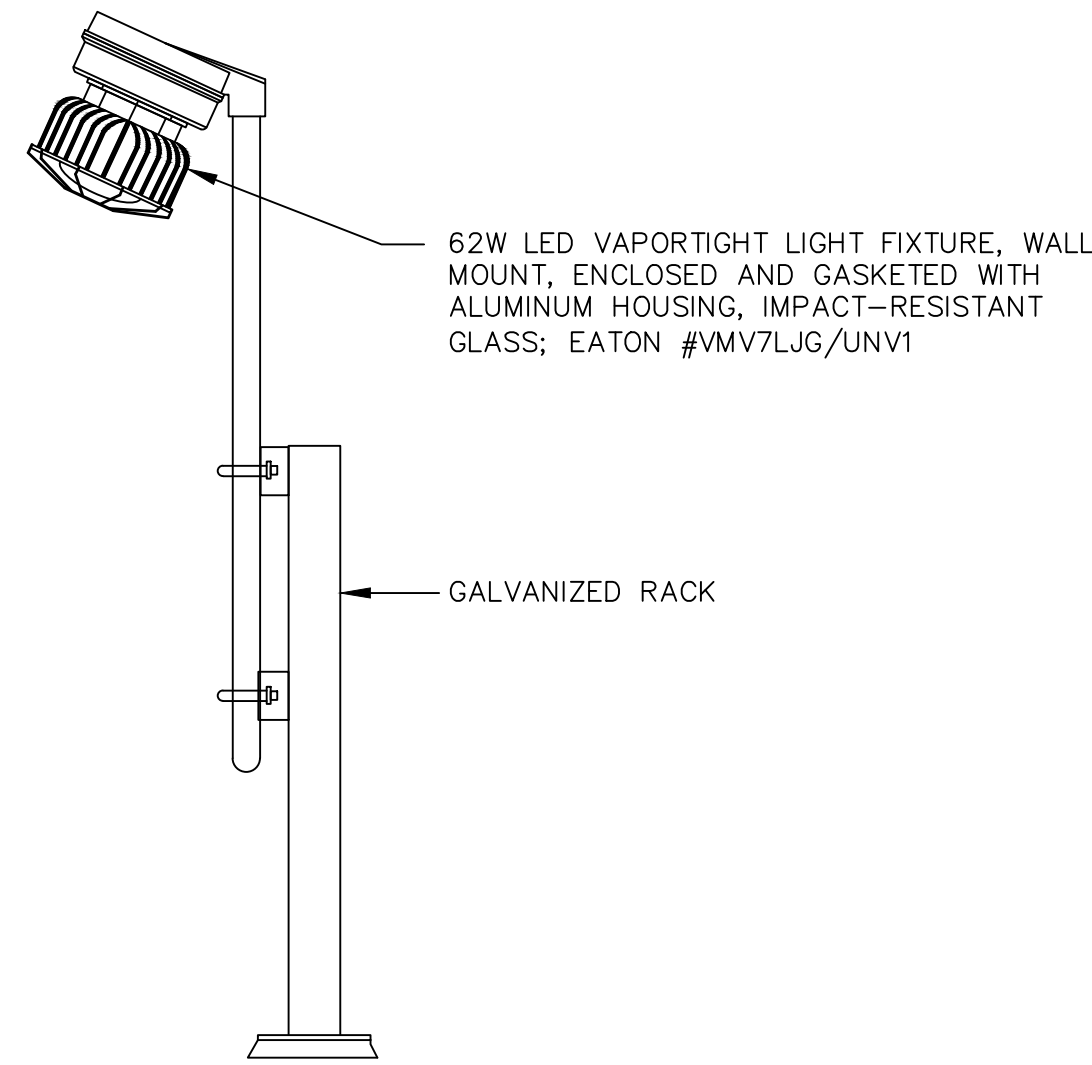


DATE	GENERATOR ADDITION DESCRIPTION	DATE	BY	CHKD	REVISION RECORD
10/03/22					
10/03/22					

DATE	DESIGNED BY	DRAWN BY	CHECKED BY	MARK
08/24/22	SPG	SPG	MLT	

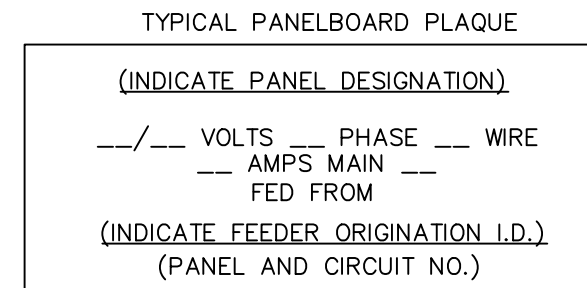
NEW RIVER TILTING WEIR STRUCTURE
 LOUISIANA
 EAST ASCENSION CONSOLIDATION GRAVITY DRAINAGE DISTRICT 1
 ASCENSION PARISH
 ELECTRICAL PLAN & RISER DIAGRAM





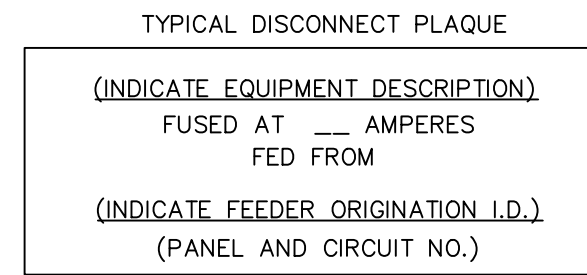
TYP. HANDRAIL & SWITCHRACK LIGHT MOUNTING DETAIL

SCALE: NONE



EQUIPMENT SIGNAGE DETAIL

SCALE: NONE



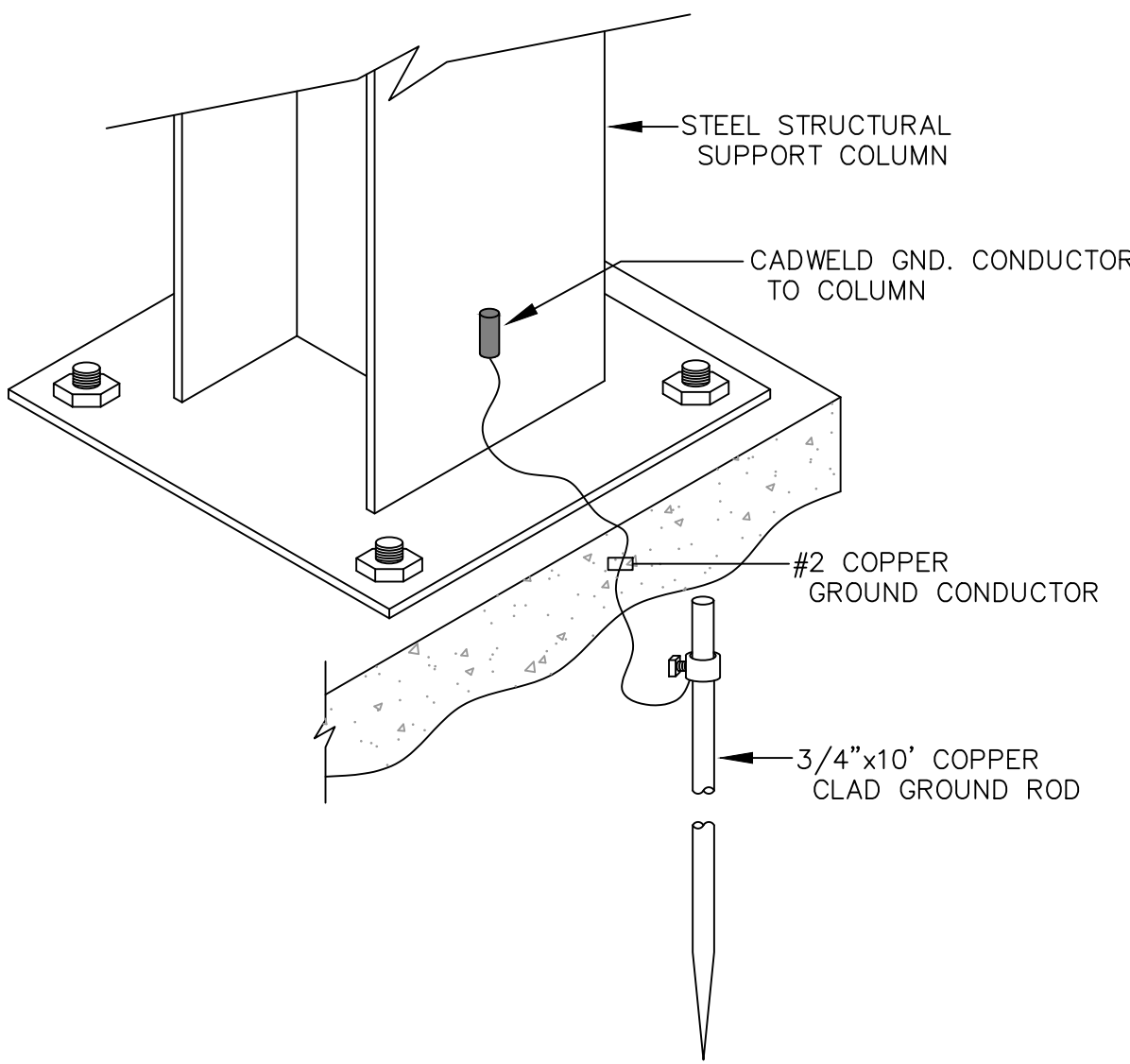
SEE SPECIFICATIONS FOR MATERIALS, COLORS SIZE LETTERING, ETC.

ATTACH PLAQUES USING INDUSTRIAL GRADE DOUBLE FACE ADHESIVE.

PLAQUES SHALL BE FURNISHED AND INSTALLED FOR ALL ELECTRICAL EQUIPMENT.

SCADA PANEL PARTS LIST			
QTY.	DESCRIPTION	MANUFACTURER	PART NO.
1	ENCLOSURE	SAGINAW	SCE-30EL3012SSLPL
1	SUBPANEL	SAGINAW	SCE-30P30
1	DRIP SHIELD	SAGINAW	SCE-DS30SS
1	MICRO 1400 PLC	ALLEN BRADLEY	1766-L32BWA
1	A/I CARD	ALLEN BRADLEY	1762-IF4
1	CIRCUIT BREAKER	ALLEN BRADLEY	1489-M1C050
1	RECEPTACLE	ALLEN BRADLEY	1492-REC15
1	POWER SURGE PROTECTOR	TRANSTECTOR	1104-15-000
1	DC SURGE PROTECTOR	TRANSTECTOR	DRDC24
1	24 VDC POWER SUPPLY	IMO	BPS-1-30-24DC
2	FUSE BLOCK & BASE	WAGO	281-623/281-418
X	FEED THRU TERMINALS	WAGO	281-601
X	GROUND TERMINALS	WAGO	281-607
1	MERAKI	CISCO	MX67C
1	MERAKI MX67C 1 YR ADVANCED SECURITY LICENSE	CISCO	LIC-MX67C-SEC-1YR
X	CAT 5 ETHERNET CABLE		3'-0"
2	LEVEL TRANSMITTER	VEGA	VEGAPULS-C-21
2	LEVEL TRANSMITTER MOUNTING BRACKET	VEGA	MOUNTING BRACKET
1	GREAT DANE ANTENNA	PARSEC	PTAGD2L-NF-J
1	CABLE SET	PARSEC	PC-2402L30SFSM
4	RELAY	IDEC	RH2B-U-AC120
4	RELAY BASE	IDEC	SH2B-05C
1	UPS	APC	BK350
1	DOOR SWITCH	SETGO	013500-00
1	ENCLOSURE A/C UNIT	SAGINAW	SCE-AC1000B120VSS6
1	RAIN GAUGE	MET ONE INSTRUMENTS	370

CONTROL PANEL PART LIST			
QTY.	DESCRIPTION	MANUFACTURER	PART NO.
1	ENCLOSURE	SAGINAW	SCE-30EL3012SSLPL
2	BACKPLATE	SAGINAW	SCE-30P30
1	DRIP SHIELD	SAGINAW	SCE-DS30SS
1	SWING OUT KIT	SAGINAW	SCE-ELSP3
1	MCB 100A CIRCUIT BREAKER	ABB	XT3NU3100AFF000XXX
1	LUG KIT LINE SIDE	ABB	KXT3CUAL2-3PC
1	LUG KIT DISTRIBUTION	ABB	KXT3MC-3PC
1	THRU-DOOR MECHANISM	ABB	KXTBRHESTFP
4	CB1, CB2, CB3, CB4 20A BREAKER	ABB	XT1NU3020AAA000XXX
7	CB5 THRU CB11 BREAKER	ABB	SU201M-K20
1	SPD-1 AC SURGE PROTECTOR	TRANSTECTOR	B70-00-6005
1	PM PHASE MONITOR	MACROMATIC	PMDU
1	SPD-2 AC SURGE PROTECTOR	TRANSTECTOR	1104-15-000
1	SN SERVICE NEUTRAL	MARATHON	EPBAD74
1	GROUNDING LUG	MARATHON	WC12064
1	FUSE HOLDER	MARATHON	6M30A3SQ
3	FUSES	COOPER BUSSMAN	FNQ-R-1
8	RELAYS	IDEC	RH2B-U-AC120
8	RELAY SOCKET	IDEC	SH2B-05C
4	3 POSITION SWITCH	IDEC	ASD322NU
4	PILOT LIGHT GREEN	IDEC	APD1QH2DNG
4	PILOT LIGHT RED	IDEC	APD1QH2DNR
1	PILOT LIGHT BLUE	IDEC	APD1QH2DNS
48	FEED THRU TERMINAL	WAGO	280-601 SERIES
14	SXS JUMPER	WAGO	280-601 SERIES
X	END STOPS & CAPS	WAGO	280-601 SERIES
1	30MM B/W	CAROLINA LASER	POWER
2	30MM B/W	CAROLINA LASER	OPEN
2	30MM B/W	CAROLINA LASER	CLOSED
2	30MM B/W	CAROLINA LASER	O C A
1	RECTANGULAR B/W 1"X2"	CAROLINA LASER	WEIR 1
1	RECTANGULAR B/W 1"X2"	CAROLINA LASER	WEIR 2
1	RECTANGULAR B/W 1"X2"	CAROLINA LASER	WEIR 3
1	RECTANGULAR B/W 1"X2"	CAROLINA LASER	WEIR 4
1	RECTANGULAR B/W 1"X2"	CAROLINA LASER	CBM
1	RECTANGULAR B/W 1"X2"	CAROLINA LASER	CB1
1	RECTANGULAR B/W 1"X2"	CAROLINA LASER	CB2
1	RECTANGULAR B/W 1"X2"	CAROLINA LASER	CB3
1	RECTANGULAR B/W 1"X2"	CAROLINA LASER	CB4
1	RECTANGULAR B/W 2"X4"	CAROLINA LASER	WEIR CONTROL PANEL
1	RECTANGULAR B/W 1"X2"	CAROLINA LASER	TS-AC
1	RECTANGULAR B/W 1"X2"	CAROLINA LASER	PM
1	RECTANGULAR B/W 1"X2"	CAROLINA LASER	SPD

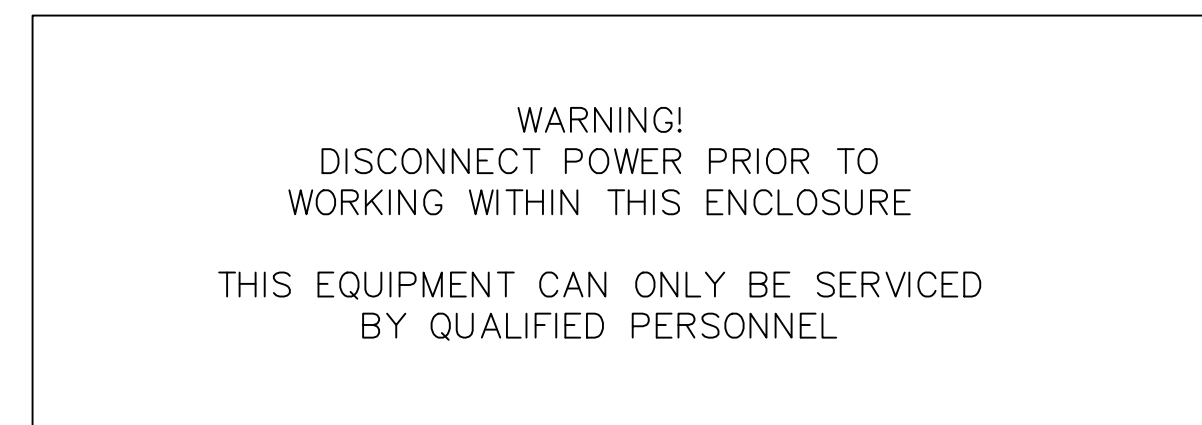


SUPPORT RACK STEEL GROUNDING DETAIL

SCALE: NONE

SIGNAGE:

- 1) THE BELOW SIGN SHALL BE MOUNTED ON THE FRONT OF ALL ELECTRICAL ENCLOSURES.

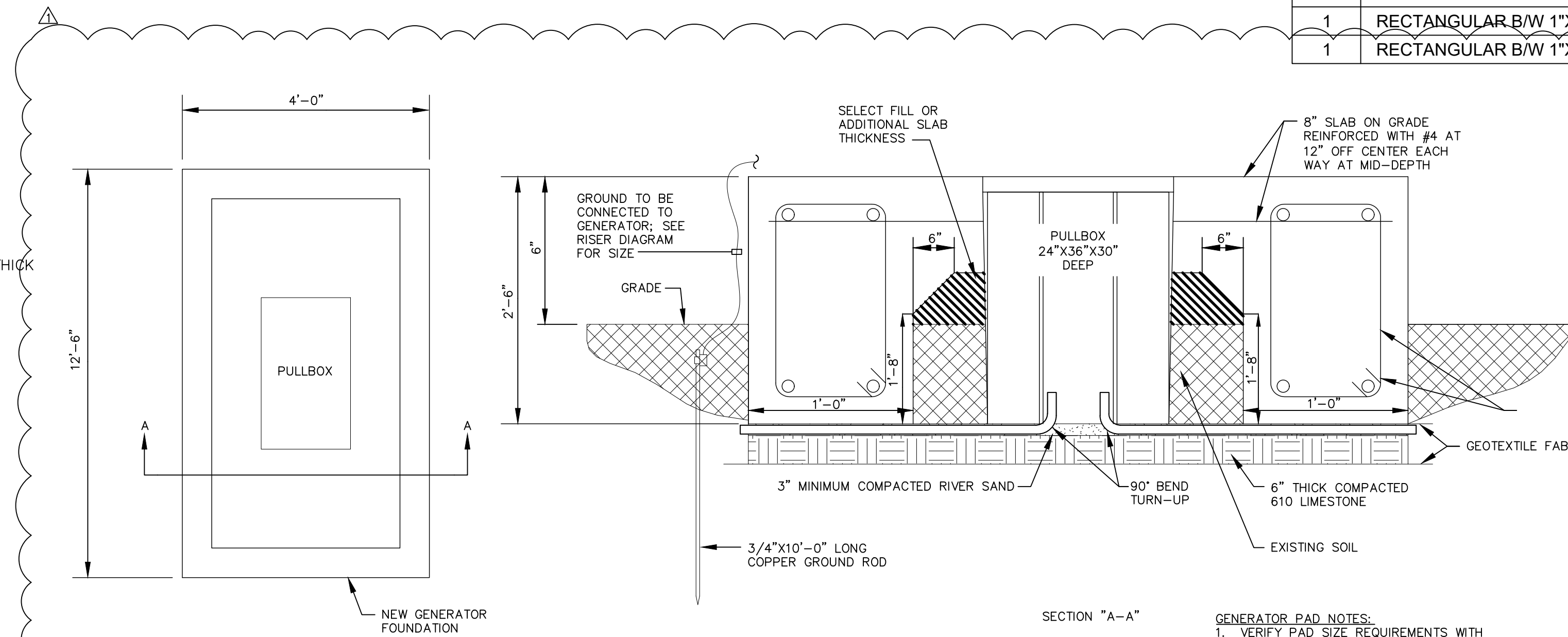


NOTES:

1. NAMEPLATES TO BE FABRICATED FROM LAMACOID PLASTIC WITH BLACK OUTER LAMINATION AND A WHITE INNER LAMINATION.
2. LETTERING SHALL BE 1/4\" HIGH CAPS, EXCEPT AS NOTED ON SCHEDULE. ENGRAVE LETTERS TO EXPOSE WHITE LAMINATION.
3. ATTACH NAMEPLATES ON EQUIPMENT IN A PROMINENT PLACE. USE TWO (2) SMALL SHEET METAL SCREWS FOR SHEET METAL ENCLOSURES. USE CONTACT BOND CEMENT ON ALL OTHER TYPE ENCLOSURES. ASSURE THAT SURFACE IS CLEAN AND FREE OF PAINT PRIOR TO ATTACHING NAMEPLATES.

SIGNAGE DETAIL

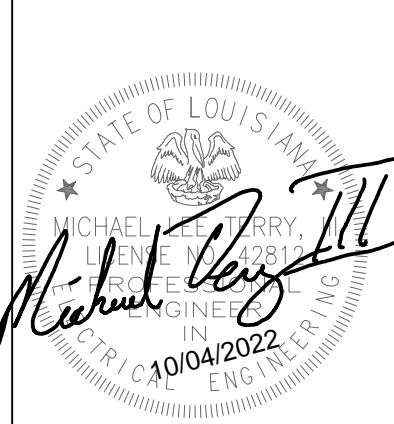
SCALE: NONE



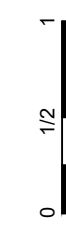
GENERATOR PAD DETAIL

SCALE: NONE

GENERATOR PAD NOTES:
 1. VERIFY PAD SIZE REQUIREMENTS WITH GENERATOR MANUFACTURER. CONTRACTOR MUST GET SHOP DRAWINGS APPROVED BY ENGINEER PRIOR TO CONSTRUCTION AND INSTALLATION.



WARNING



IF THIS BAR DOES NOT MEASURE 1\" (BASED ON 1/2\"x3/4\" SHEET) THEN DRAWING IS NOT TO SCALE.



REVISION RECORD	DATE	DESCRIPTION	MARK	BY	CHKD
1	10/03/22	GENERATOR ADDITION	SPG	MLT	

DESIGNED BY:	DATE:	DRAWN BY:	CHECKED BY:
SPG	08/24/22	SPG	MLT

NEW RIVER TILTING WEIR STRUCTURE
 LOUISIANA
 ASCENSION PARISH
 EAST ASCENSION CONSOLIDATION GRAVITY DRAINAGE DISTRICT 1
 ASCENSION PARISH
 ELECTRICAL DETAILS & PARTS SCHEDULES



