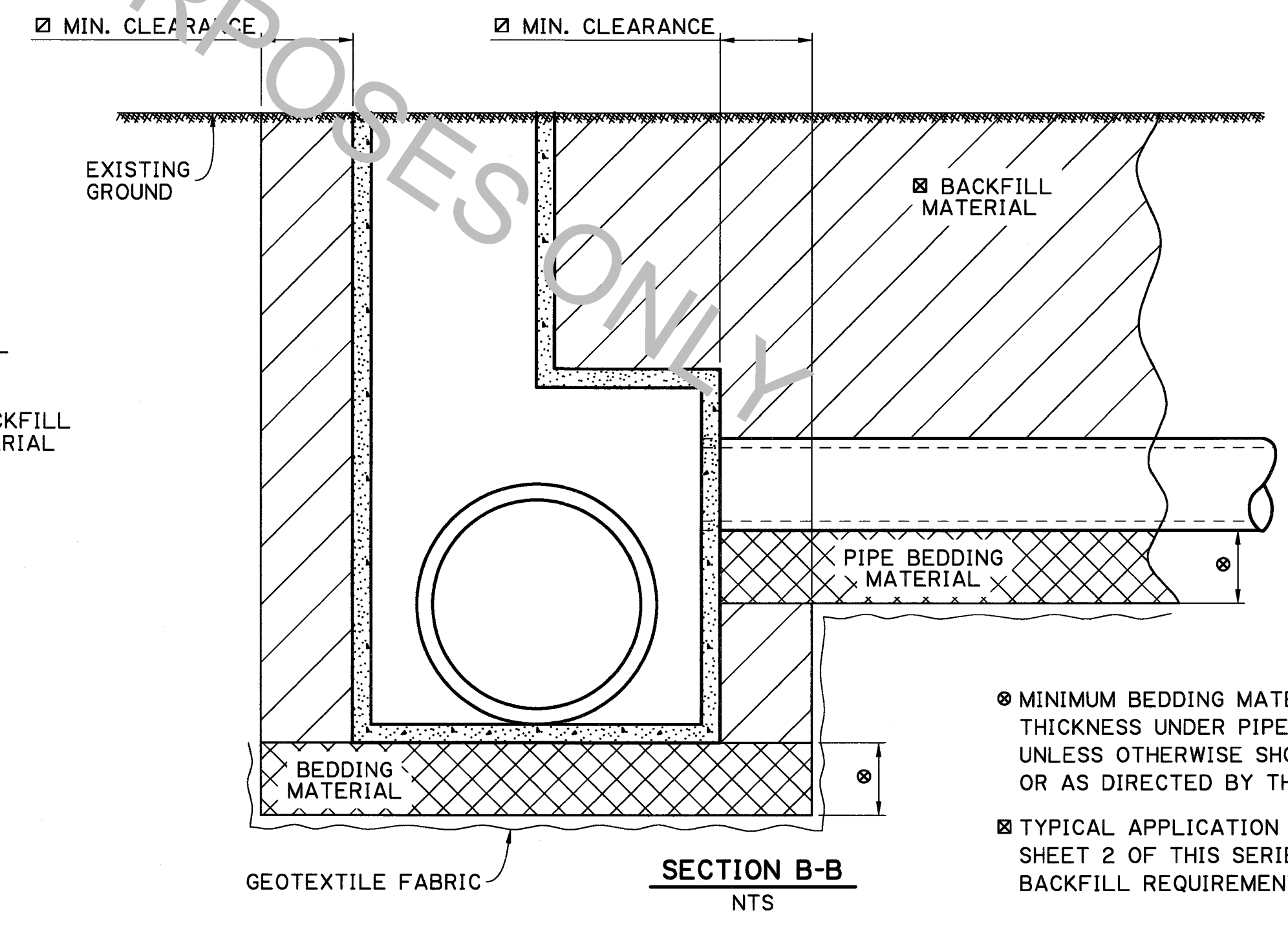
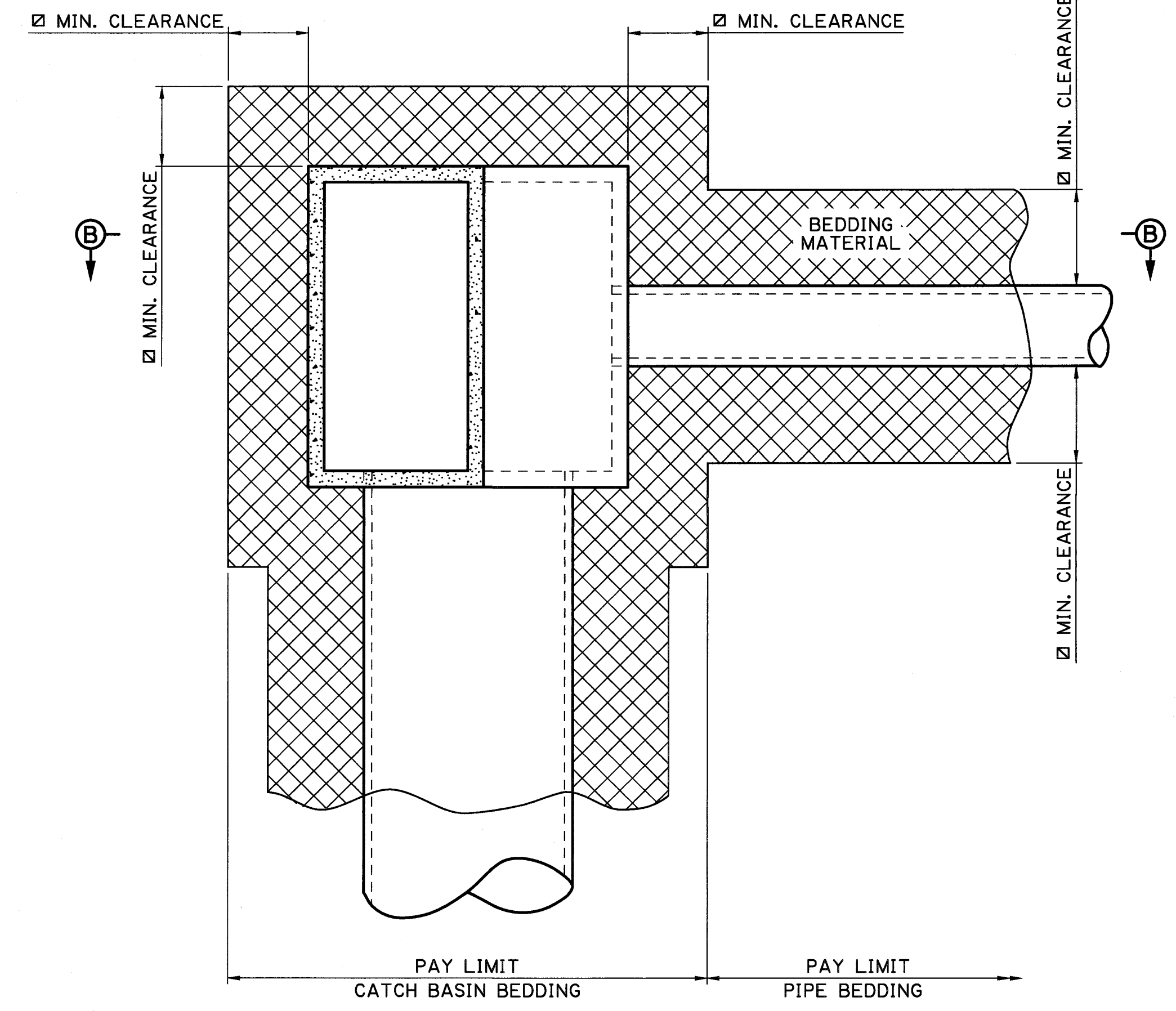
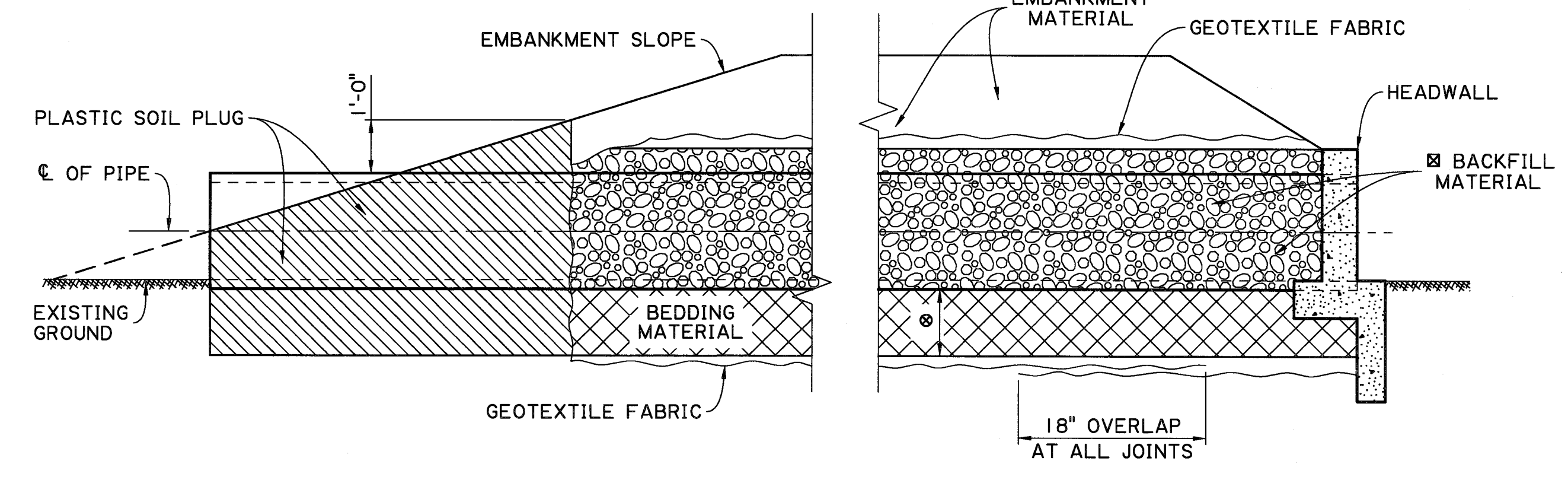
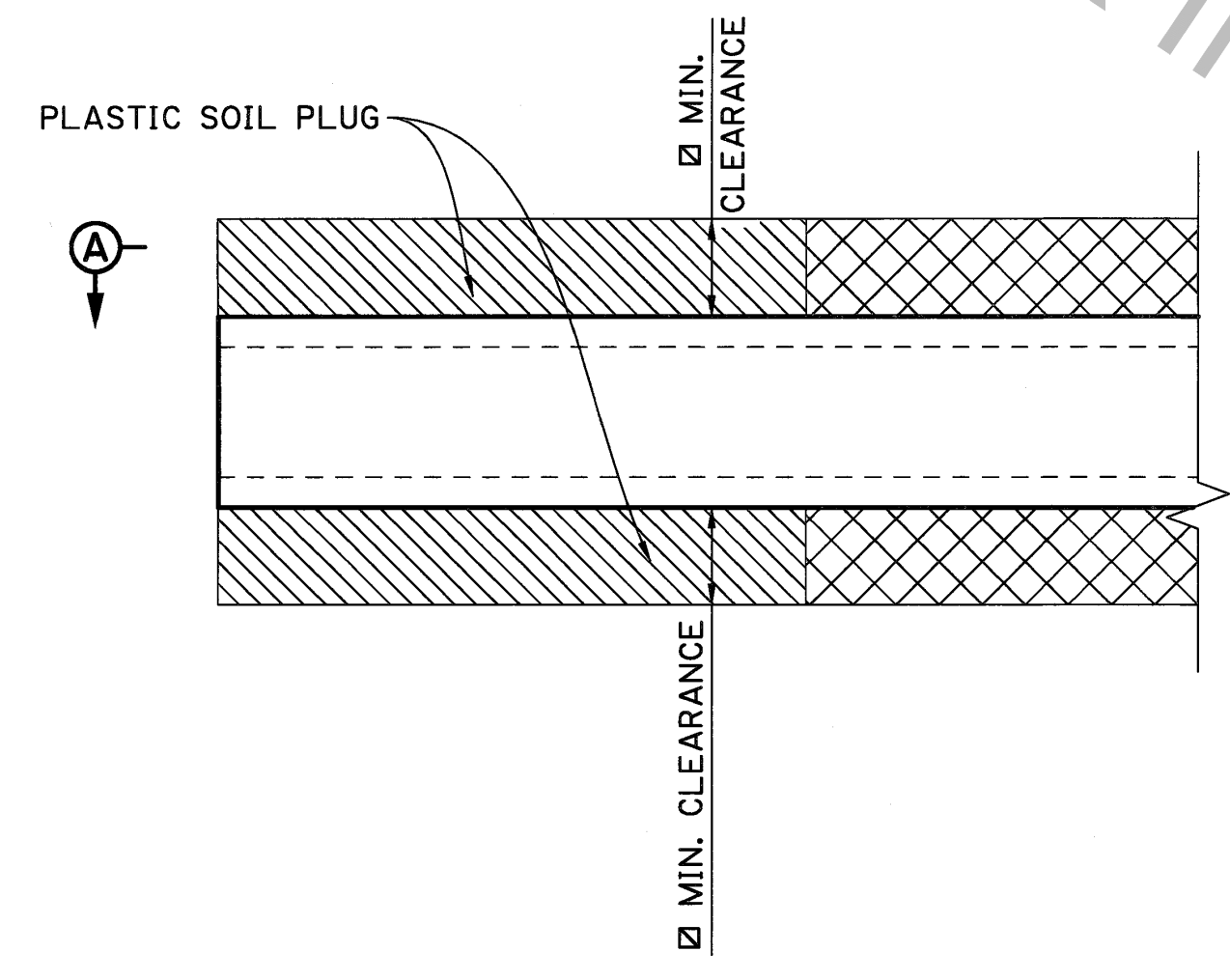


10/5/2021 07:51

GENERAL NOTES :

1. REINFORCED CONCRETE PIPE AND FLEXIBLE PIPE ARE SHOWN AS TYPICAL STRUCTURES. DETAILS ALSO APPLY TO REINFORCED CONCRETE BOX CULVERT, REINFORCED CONCRETE PIPE ARCH, CORRUGATED METAL PIPE ARCH, AND CORRUGATED STRUCTURAL PLATE STRUCTURES.
2. CONSTRUCTION COVER REQUIREMENTS MAY EXCEED FINAL COVER. SEE SECTION 701 OF LADOTD STANDARD SPECIFICATIONS.
3. CROSS DRAIN DETAILS APPLY TO ALL REACHES OF PIPE UNDER RIGID OR FLEXIBLE ROADWAYS.
4. TRENCH SAFETY STANDARDS SHALL BE IN ACCORDANCE WITH SECTION 701 OF LADOTD STANDARD SPECIFICATIONS.

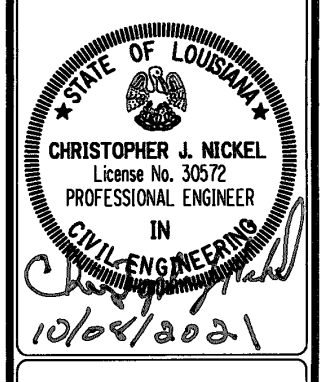
| MINIMUM TRENCH CLEARANCE | | |
|--------------------------|-----------------|----------------|
| TYPE OF PIPE | INSIDE DIAMETER | MIN. CLEARANCE |
| REINFORCED CONCRETE PIPE | ALL | 18" |
| FLEXIBLE PIPE | <48" | 18" |
| FLEXIBLE PIPE | ≥48" | 24" |



⊗ MINIMUM BEDDING MATERIAL THICKNESS UNDER PIPE IS 6 INCHES UNLESS OTHERWISE SHOWN ON PLANS OR AS DIRECTED BY THE PE.

⊗ TYPICAL APPLICATION SHOWN. SEE SHEET 2 OF THIS SERIES FOR BACKFILL REQUIREMENTS.

| | | |
|----------|-----------------|--------------|
| DESIGN | PARISH | SHEET NUMBER |
| CHECK | CONTROL SECTION | |
| DETAIL | LFH | |
| CHECK | AMN | |
| REVIEW | CJN | |
| SERIES # | 1 OF 2 | |



APPROVED BY CHIEF ENGINEER:
Christopher J. Nickel
DATE: 11/16/2021



**DRAINAGE STRUCTURES
BEDDING & BACKFILL**



PAVEMENT & GEOTECHNICAL SERVICES

| | |
|--|-------------------|
| SHEET NUMBER | 301 |
| DESIGNED | DBC |
| CHECKED | JBM |
| DETAILS | SFU |
| CHECKED | DBC |
| DATE | NOV. 2022 |
| SERIES NO. | 1 OF 13 |
| NO. | |
| DATE | |
| REVISION OR CHANGE ORDER DESCRIPTION | |
| BY | |
| PARISH | ASCENSION |
| CONTROL SECTION | |
| PARISH PROJECT | T.O. 2021-HEI-001 |
| DOTD STANDARD PLANS: BM-01 | |
| CHANNEL IMPROVEMENTS | |
| HEI Hartman Engineering, Inc. Consulting Engineers | |